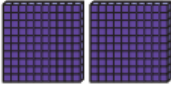




# Ashfield Valley Primary School— Year 3—Spring 2-Maths Knowledge Organiser

## Place value

256

two hundred	fifty	six
		
200	50	6

## Addition and subtraction

### A7: Column Addition

$$\begin{array}{r} 687 \\ + 248 \\ \hline 935 \end{array}$$

### S11: Column Subtraction

$$\begin{array}{r} 687 \\ - 356 \\ \hline 331 \end{array}$$

## Multiplication and division

### M6: Column Multiplication

$$\begin{array}{r} 147 \\ \times 4 \\ \hline 588 \end{array}$$

### D10: Short Division

$$136 \div 4 = 34$$

$$\begin{array}{r} 34 \\ 4 \overline{)136} \\ \underline{12} \phantom{0} \\ 16 \\ \underline{16} \\ 0 \end{array}$$

## Fractions



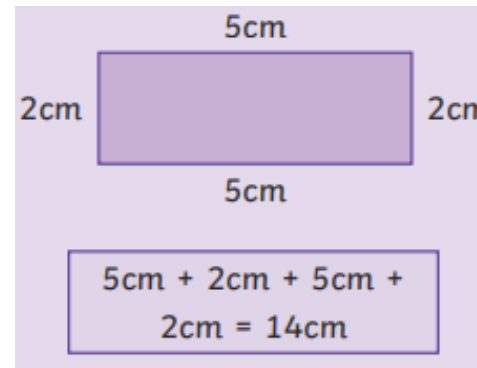
$\frac{3}{8}$

**Numerator**  
How many equal parts of the whole are needed?

**Denominator**  
How many equal parts are in the whole?

## Perimeter

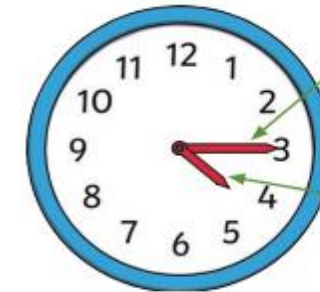
Area is the amount of space inside a 2D shape. Perimeter is the total distance around the outside of a 2D shape.



## Time

**Minute Hand**  
The long hand points to the minutes past or the minutes to the hour.

**Hour Hand**  
The short hand points to the hour. If this hand is pointing between hours, it is either past the earlier hour or to the later hour.



## Fractions of amounts

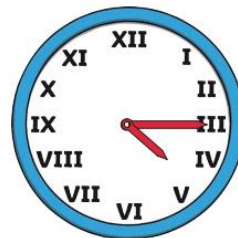
$$\frac{1}{4} \text{ of } 24 = 6$$



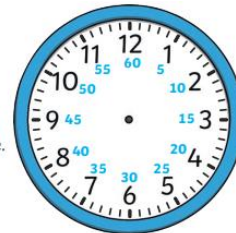
$$\frac{1}{3} \text{ of } 72 = 24$$



$$\frac{2}{5} \text{ of } 40 = 16$$



There are 60 seconds in an minute.



There are 60 minutes in an hour.



12:00

twelve o'clock



12:15

quarter past twelve



12:30

half past twelve



12:45

quarter to one

Know roman numerals for time

Number	1	2	3	4	5	6	7	8	9	10	11	12
Roman numeral	I	II	III	IV	V	VI	VII	VIII	IX	X	XI	XII